



GEOHELDA

NIGERIA | CANADA | INDIA

Powering a Digital Future



Oil & Gas Existing Portfolio

COMMITTED ORGANIZATION FOR ENERGY CLIENTS



NIGERIA | CANADA | INDIA

Local & International
technical personnel

Principals with average of
20+ years in select
Industry verticals

Project and risk
management
methodologies

Quality service delivery
focused

Industry specialists in
designing and developing
next-generation digital
platforms

Head office in Nigeria,
Project offices in Canada
& India

OIL & GAS - PROJECTS

Production and Facility Engineering

Designed Production Optimization Models, Tuned Models (Production Allocation, Target Monitoring), Tuned Integrated Models (Optimum Choke Setting, Optimum Separator Parameters)

Asset Evaluation Reports

Designed an integrated asset development framework covering Reservoir Performance Model, Economic Model and Forecast & Development Model

3D Seismic Data Re-Processing

Project involved 2D seismic PSTM and AVO test processing, Inversion studies, Field Development Studies, seismic PSTM reprocessing

Water Injection Study

Prediction of oil production by water flooding, Petrophysical analyses on 28 wells, wireline logs and core data analysis, geo-cellular model using object modeling with production history reconciliation

AVO & Seismic Inversion for Reserves Delineation

Project involved provision of amplitude versus offset (AVO) study to delineate possible areas of gas accumulation along with Inversion study with Seismic Sculpting to produce 3D Facies

Brown Field Production Enhancements

Brown field production enhancement deploying techniques that optimize well performance and production levels

OIL & GAS - PROJECTS

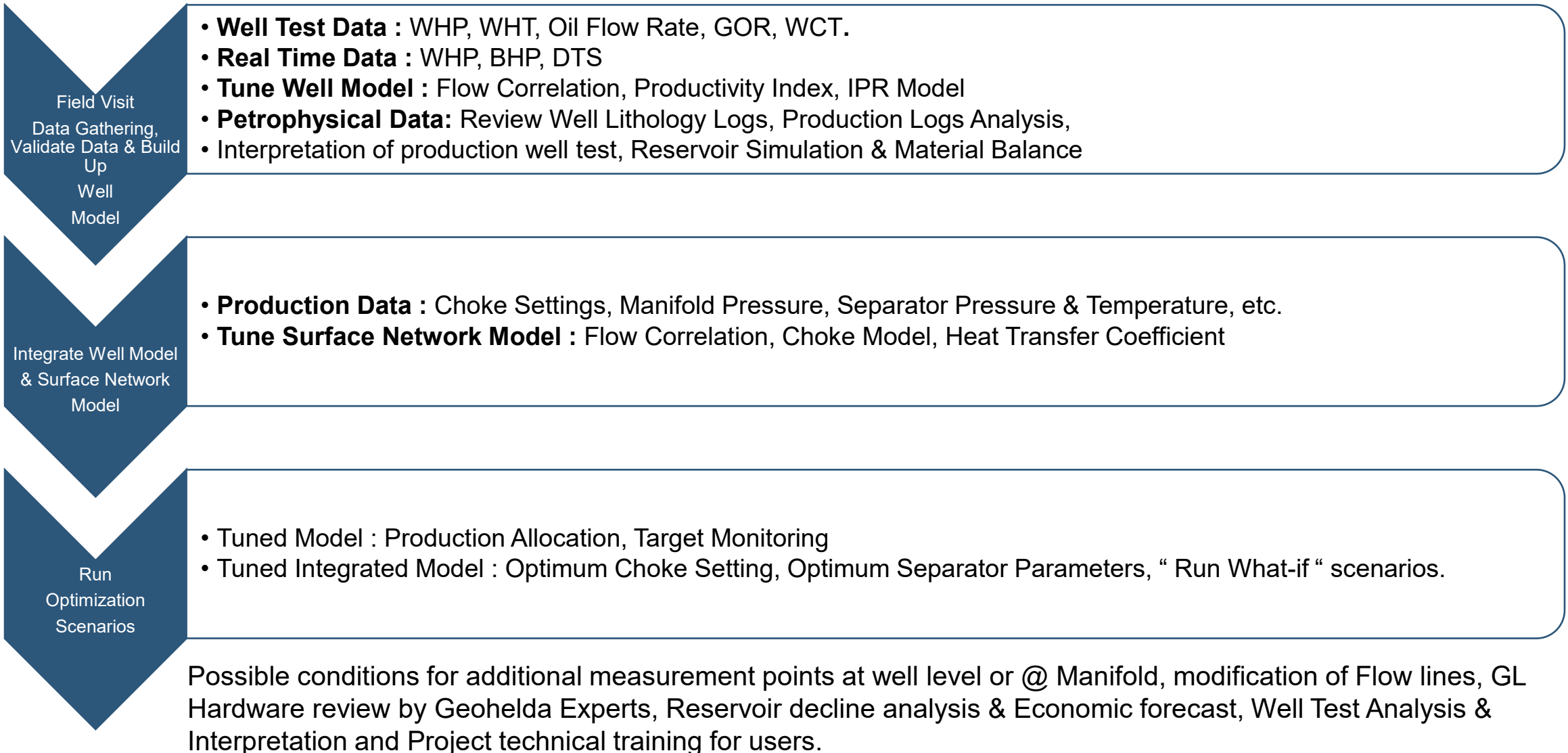
Production and Facility Engineering Hydrocarbon Accounting and Back Allocation

- ✓ Hosted In-House/Cloud
- ✓ Role-based security & Workflow
- ✓ Auditing & Notifications
- ✓ Oracle database storage
- ✓ Hierarchical allocation of production, export, sales streams & consumed streams
- ✓ Supports 3rd Party Allocation tools
- ✓ Integrated into Nigerian Govt/DPR report templates
- ✓ Local support
- ✓ Standard ticket escalation system

29 Aug 2018 12:38 Production Reporting ? [Icons]						
Processes	Process Name	Process Logic	Type	Logging Level		
Process Execution	D-0. Initialise Reconciled Data Process	Initialise Reconciled Daily OML29_process.xls	spreadsheet	Normal	Run	ⓘ
Process History	D-1. Import Daily file	Daily Production Report Template.xlsx	import	Normal	Run	ⓘ
Notifications	D-1. Import Daily OML Data from file	Import Daily OML New Screens.xlsx	import	Normal	Run	ⓘ
Allocation Run	D-2. Daily Meter Validation Process	Daily Meter Process.xlsx	spreadsheet	Normal	Run	ⓘ
Meter Readings	D-3. Daily Unreconciled Allocation Process	Daily Unreconciled Allocation Process.xlsx	spreadsheet	Normal	Run	ⓘ
Measurements	D-4. Daily Reconciled Allocation Process	Daily Reconciled Allocation Process.xlsx	spreadsheet	Normal	Run	ⓘ
Well Potential	D-5. Daily Partner Splits	Daily Partner Splits Process.xlsx	spreadsheet	Normal	Run	ⓘ
Daily Facility Allocation	D-6. Daily Email Report Distribution	DailyReportsEmailControl.xls	spreadsheet	Normal	Run	ⓘ
Daily Field Allocation	M-0. Initialise Monthly Data	Initialise Monthly OML process.xls	spreadsheet	Normal	Run	ⓘ
Daily Well Allocation	M-1. Monthly Allocation Process	Monthly Allocation Process.xls	spreadsheet	Normal	Run	ⓘ
Monthly Facility Allocation	M-2. Monthly Roll-Up Process	Monthly Rollup Process.xlsx	spreadsheet	Normal	Run	ⓘ
Monthly Field Allocation	S-1. Multiple Daily Meter Validation Process	Multiple Daily Meter Processes.xlsx	spreadsheet	Normal	Run	ⓘ
Sampling	S-2. Multiple Daily Unreconciled Allocation Process	Multiple Daily Unreconciled Allocation Processes.xlsx	spreadsheet	Normal	Run	ⓘ
Monthly Well Allocation	S-3. Multiple Daily Reconciled Allocation Process	Multiple Daily Reconciled Allocation Processes.xlsx	spreadsheet	Verbose	Run	ⓘ
Monthly BCOT	S-4. Multiple Daily Partner Split Process	Multiple Daily Partner Splits.xlsx	spreadsheet	Normal	Run	ⓘ
	S-5. Import Well Tests	Well Tests Import Merge.xls	import	Normal	Run	ⓘ

OIL & GAS - PROJECTS

Production and Facility Engineering Production Optimization

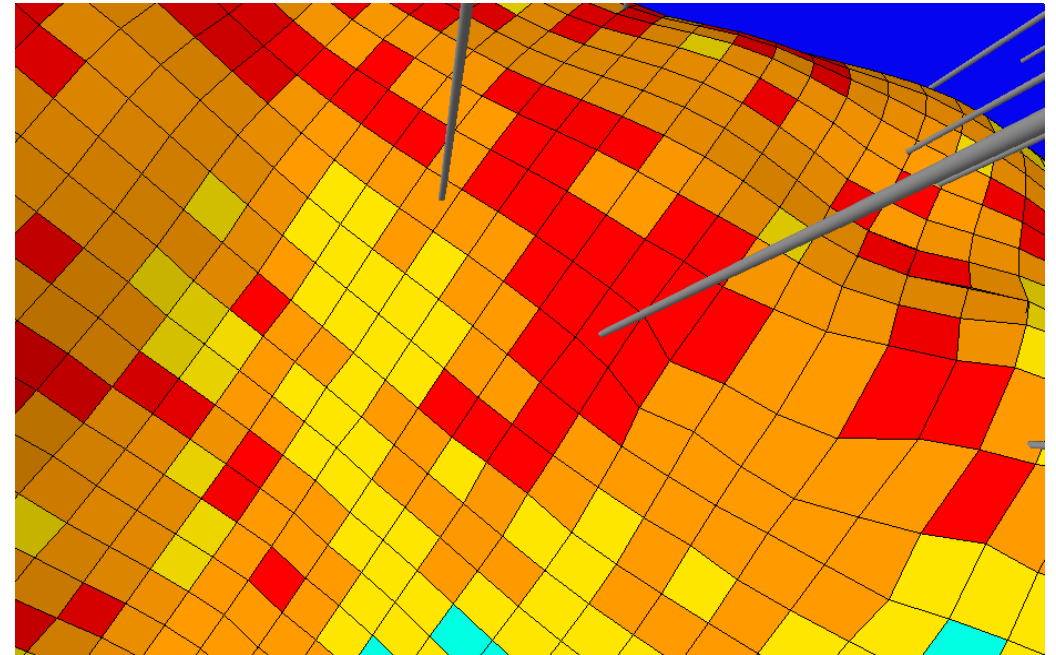


OIL & GAS - PROJECTS

Water Injection Study

Prediction of oil production by water flooding

- ✓ Petrophysical analyses on 28 wells, wireline logs and
- ✓ core data analysis
- ✓ Geocellular model using object modeling
- ✓ Production history matched
- ✓ Additional six water and gas injection cases.
- ✓ Multi-disciplinary study geophysicists, Petro physicists, geologists, and reservoir engineers
- ✓ Duration of study – 9 months



OIL & GAS - PROJECTS

Aim: Propose options to optimize the existing facility from 30,000bbl/d to a production capacity of 60,000bbl/d of fluid

Existing Facility (flow station consists of 2 trains)

- ✓ 1 x LP Separator (2 phase)
- ✓ 1 x HP Separator (2 phase)
- ✓ 1 x surge vessel (2 phase)
- ✓ Test Separator & a XHP separator
- ✓ HP, LP, Test & XHP Manifold

Proposals: Optimization scenarios

- ✓ Water will be separated in a 3rd party facility
- ✓ Water will be separated at the HP separation stage
- ✓ Water will be separated at the LP separation stage

Scenario one was selected and implemented

Facility Debottlenecking and Optimization



OIL & GAS - PROJECTS

Aim: Propose solutions to optimize production

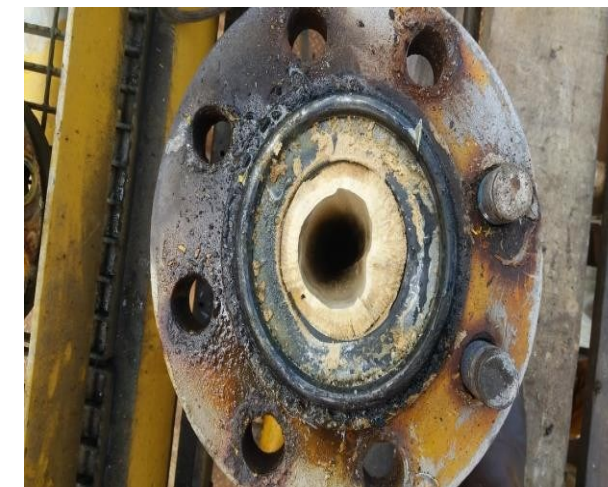
Challenges

- Ruptured 16" pipeline to manifold
- Sand and scale deposition
- Improper separation of oil, gas and water
- Inability to conduct MER and other well tests
- Back pressure to other wells
- Inaccurate crude oil accounting and allocation

Proposal

- Well workover
- Chemical injection management
- Revamp of test separator
- Maintenance of ruptured pipeline, gas compression system and prover loop metering system
- Replacement of faulty valves, transmitters, detectors, chokes and positioners

Facility Debottlenecking and Optimization



OIL & GAS - PROJECTS

Aim: To improve the environmental quality of flare combustion products discharged into the atmosphere.

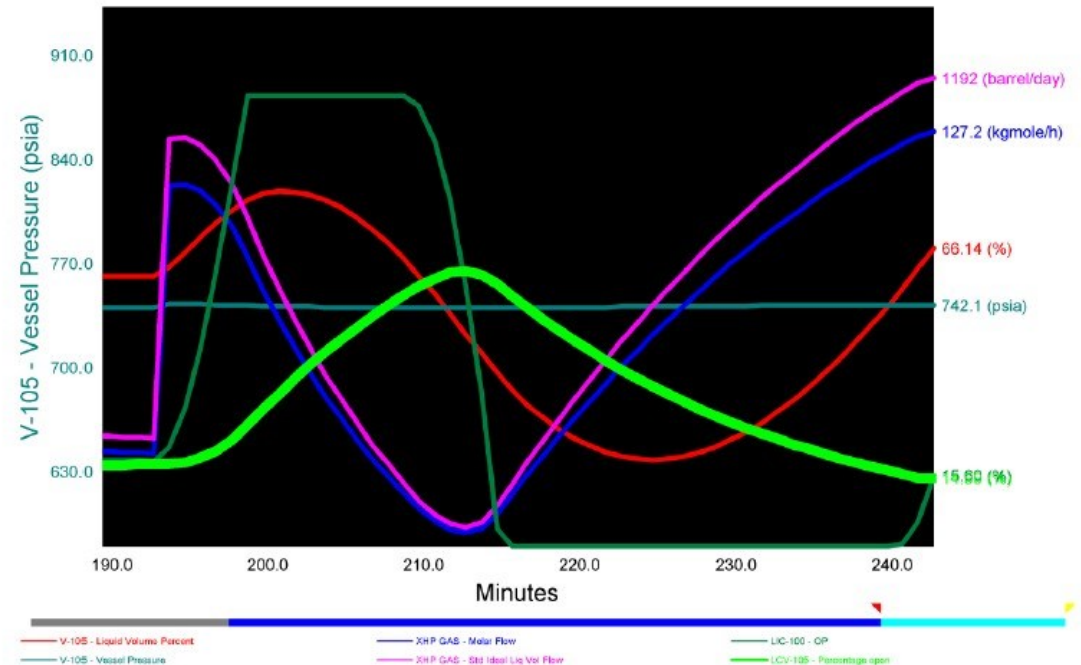
Challenges:

- Intermittent liquid carryover into the flare network
- Sooty flames appearing intermittently when flaring excess gas from the flow station

Methodology: Facility Process Simulation

- Steady-state model
- Dynamic model
- Model Tuning and Sensitivity Analysis
- Simulation of possible gas separation upsets in separators
- Reporting

Liquid Carryover – Gas Separation Study



Solutions: Replacement of the following:

- Level control transmitter due to output signal error
- Liquid level control valve due to sticking effect
- Mist extractor
- Backpressure controller due to signal error

OIL & GAS - PROJECTS

Challenges

- Determination of Lithology in a complex channel reservoir
- Hydrocarbon fluid type determination in gas/condensate field
- Good VSP but missing density log

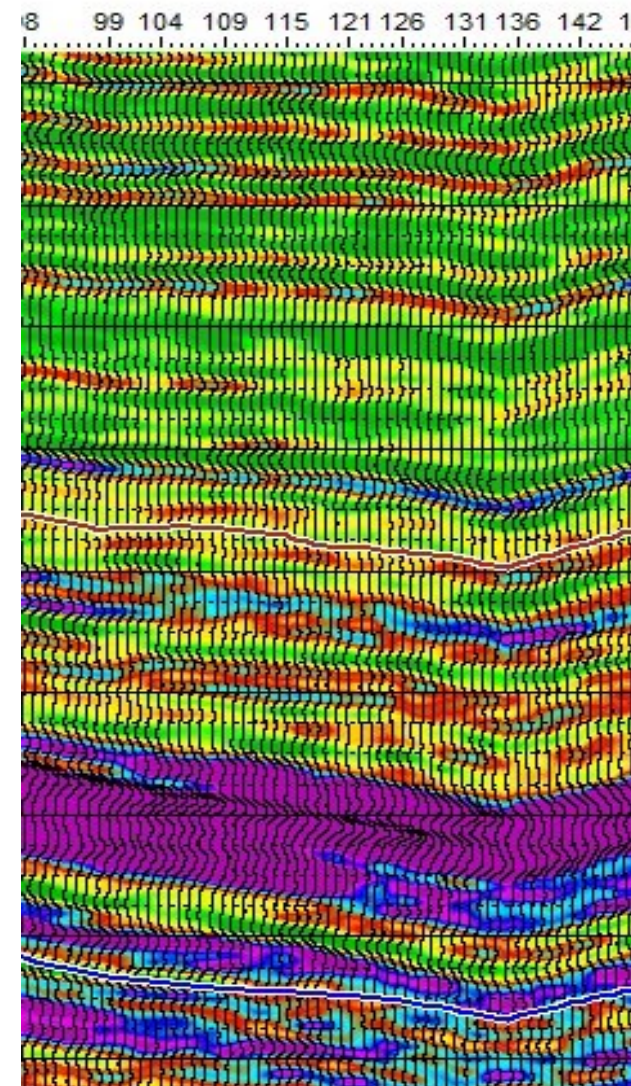
Solutions by Geohelda

- Provision of amplitude versus offset (AVO) study for 4 weeks helps to delineate possible areas of gas accumulation.
- Inversion study was combined with Seismic Sculpting to produce 3D
- Facies Model
- Proprietary sequence stratigraphy solution

Field with 22 wells – 18 with log data

- Project took 4 months
- Static model at 90% accuracy (depth and lithology) predictions while drilling
- Successful gas field development

AVO & Seismic Inversion for Reserves Delineation



OIL & GAS - SERVICES

Reservoir Evaluation Services

Asset
Characterization &
Valuation Studies

Field Development
Studies

Well Intervention

Production and Facility Engineering

Measurement,
Metering and Fluid
Control

Hydrocarbon
Accounting and Back
Allocation

Process Automation
and Control

Production
Optimization

Investment/ Divestment Consulting

Economic Evaluation

IT Services

Support, Data Mgmt &
Application
Development

Seismic Data
Processing

Audit and Pre-
qualification Services

Training and
Manpower
Development

OIL & GAS - SOLUTIONS



Upstream Data Analyzer

- ✓ Solution certified in SAP HANA which helps in instant visualization as well as predictive analysis of logs from Oil & Gas upstream operations
- ✓ Uses prediction models for sub-surface characteristics, drilling plans, production
- ✓ Supports application of AI/ML algorithms for NPT (Non-Productive Time) reduction strategies



Drilling Operations Network

- ✓ Solution addresses the need for real-time dashboards for drilling consoles for mud, pump, drill assembly, well integrity and pit/tank monitoring
- ✓ Allows real-time, micro-batch as well batch wise visualization as well as analytics - from a time + depth perspective
- ✓ Manages multiple monitoring dashboards - visibility to drilling parameters, such as mud properties, pump and casing pressure, tank volumes, etc.



E&P Data Manager

- ✓ Solution significantly reduces the TAT (Turn Around Time) for E&P data transformations jobs and enable Process Automation in E&P data management domain
- ✓ Adapters built in for SEG Y, LAS, WITS, WITSML, PRODML, RESQML, etc.
- ✓ Automation Scripts for Routine tasks like Splicing, Merging, Data Transformation
- ✓ E&P Logs Visualization extensions for Enterprise Reporting Tools

OIL & GAS - FOCUS AREAS



Seismic Data Management

- Seismic Scanned Images to SEG-Y
- EBCDIC Header Standardization (2D, 3D & VSP)
- Facies Prediction/ Classification
- AI/ML models to identify feature classes - Salt, Seismic Inversion



Well Logs Digitization

- Well Logs Digitization
- Well Logs Splicing and Merging
- Well Logs Correlation
- Lithology Prediction/Facies Classification



Real-Time Drilling

- Drilling Consoles for Well Integrity
- Auto Identification of Drilling Process
- Drilling Efficiencies for NPT
- Stuck Pipe, Drill Bit Prediction

OIL & GAS - FOCUS AREAS



Production Monitoring

- Crude Oil Production Forecasting
- Crude Oil Production Audits
- Decline Curve Analysis
- Production Optimization (Flow Rate Forecasting)



Reservoir Modelling

- Gas Lift Optimization (Artificial Lift Selection)
- Reservoir Production & Recovery Factor Analysis
- EOR Analytics



Pipeline Analytics

- PODS 7.X Migration
- PODS Data Management
- Pipeline 360 - PODS Analytics
- Pipeline Integrity Analytics (using Deep Learning)

KEY OIL & GAS CLIENTS



**NIGERIAN UPSTREAM
PETROLEUM REGULATORY
COMMISSION**



KEY BUSINESS PARTNERS





Oil & Gas Upcoming Portfolio

KEY UPCOMING PROJECTS

NUPRC

PPDM 3.9 Data Warehouse
Design and Deployment

Operator Submission
Workflow System for E&P
Data Controls

NPMS Enhancements

Data Management Support
Services

Analyst Reporting Platform
& Services

NMDPRA

Brown Fields Production
Optimization

Smart Gas Retail Stations

Safety - PODS Analytics,
Pipeline Integrity Analytics

Other Initiatives

Gas Flaring Assessment
and Analytics

Safety - Oil Spill Analytics

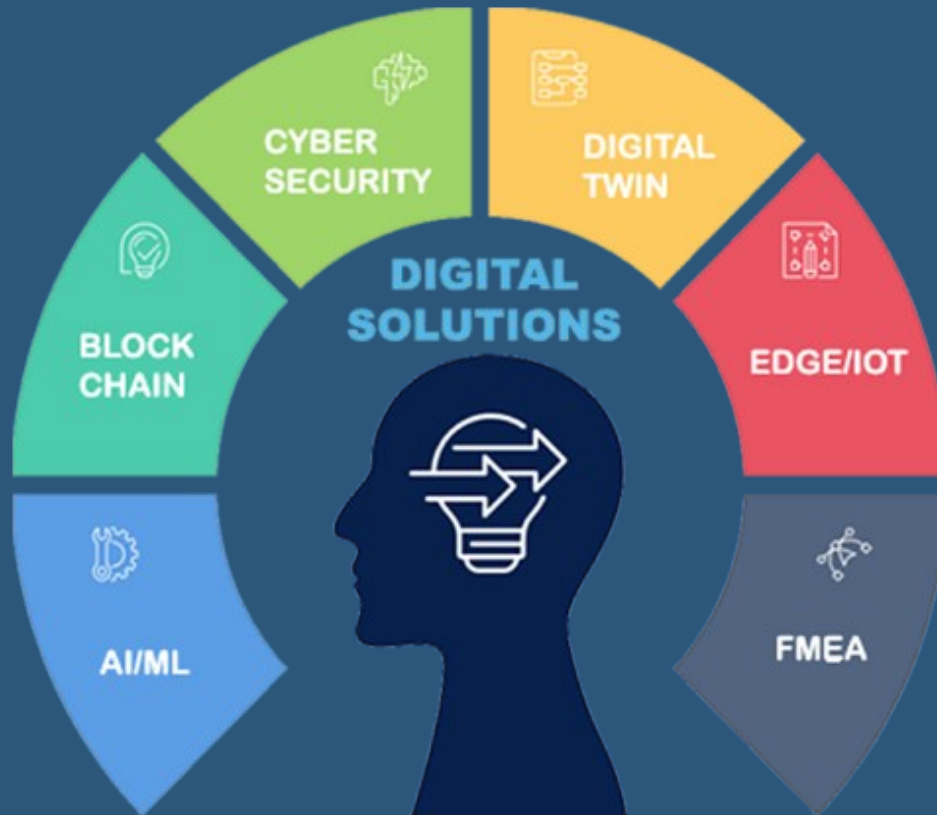
Sustainability - Emission
Analytics

AI COE - Design and
Maintain for the Regulators



Digital Portfolio

PARTNER FOR NEXT GEN DIGITAL ENTERPRISES



Digital Transformation
Strategy

Platform Architecture and
Analysis

Industrial AI Center of
Excellence (CoEs)

Technical Solution Design
and Development

Service Experience Design to
Deploy

Business Process
Reengineering

GEOHELDA EXPERTISE

Oil & Gas



- Expertise in E&P data analytics, production analytics, hydrocarbon accounting, pipeline & refinery plants
- Involved in extended R&D works, application support & project management areas
- Handled projects in process automation, analytics & augmentation services

Renewables



- Expertise in EV BMS analysis, charging stations, grid data management, battery storage & CO2 capture
- Managed projects in the areas of production forecasting, asset failure prediction & FMEA
- Handled projects in leak detection, GHG emission, ESG reporting

Healthcare



- Expertise in EMR analytics, operational dashboards, fraud analytics & genomics
- Managed Build, Operate & Transfer (BOT) models for healthcare analytics programs
- Handled projects in deep learning on medical images, clinical trails & fraud in insurance claims

Finance



- Expertise in financial risks, smart contracts, contracts analytics & financial forecasting
- Setup COEs for managing shared services in F&A
- Handled projects in robo-advisory services, blockchain, credit lending & risk management services

IT SERVICES



Advisory Support

- Enterprise Automation
- Business Value Assessment
- Application Portfolio Rationalization
- Infrastructure Design and Recommendations
- Process Assessment for Automation and Analytics opportunities



Digital Transformation

- Transformation Strategy
- Platform Architecture and Analysis
- Center of Excellence (CoEs)
- Digital Solution Design & Development
- Service Experience Design to Deploy
- Business Process Reengineering



IT Implementation

- Project Management
- Design, Build and Test Services
- Application Setup
- Go-Live Support
- Deployment Services



Application Maintenance

- Maintenance Support
- Change Management
- Incident, Problem Management
- Continuous Performance Improvement
- Upgrades for Optimization and Performance

IT SERVICES



Technology CoEs

- Setup Technology COEs for technology acceptance
- BOT (Build, Operate and Transfer) Model for R&D
- IP Development and Transfer for Commercialization
- Design and Develop POCs/Prototypes



E-Commerce/M-Commerce

- E/M Commerce Portals & Apps
- Social Media Management
- Interactive Product Catalogue
- E-Procurement



Training

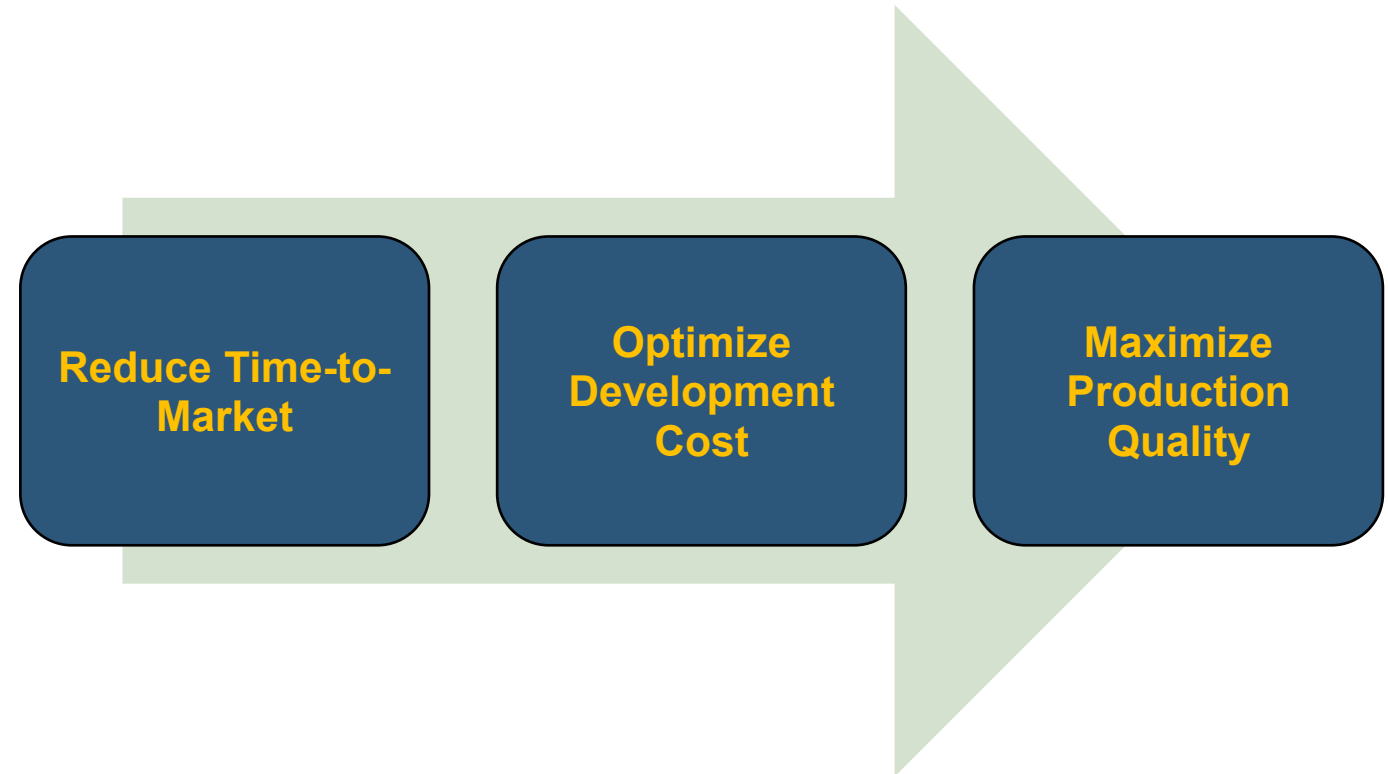
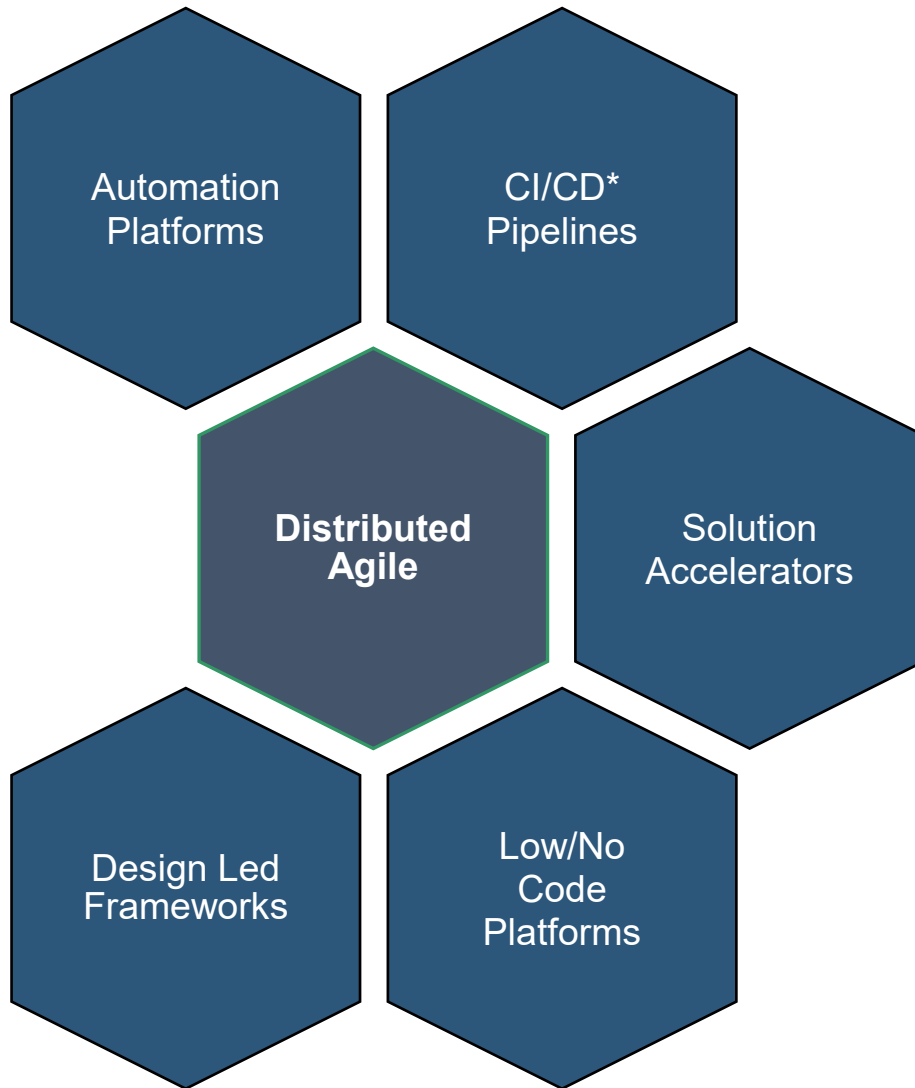
- Enterprise Analytics
- Industry Specific Solutions
- E-Commerce
- Emerging Technologies



BPO/KPO Services

- Procure to Pay (P2P)
- Order to Cash (O2C)
- Record to Report (R2R)
- Credit Lending
- Mortgage Processing
- Risk Management

IT PROJECTS DELIVERY APPROACH



*Continuous integration (CI)/Continuous delivery (CD)

CLIENT ENGAGEMENT WITH PARTNER ALLIANCES



Engagement Model

- On demand services partner
- Platform approach with "Cloud-Mobile-AI" as design strategy

Business Alignment

- Solutions based on digital innovation and business demands
- Lower TCO by adopting Cloud, Hybrid stack using Open Source and prototyping using SCRUM

Commercial Flexibility

- Outcomes based contracts
- Business SLAs instead of operational SLAs

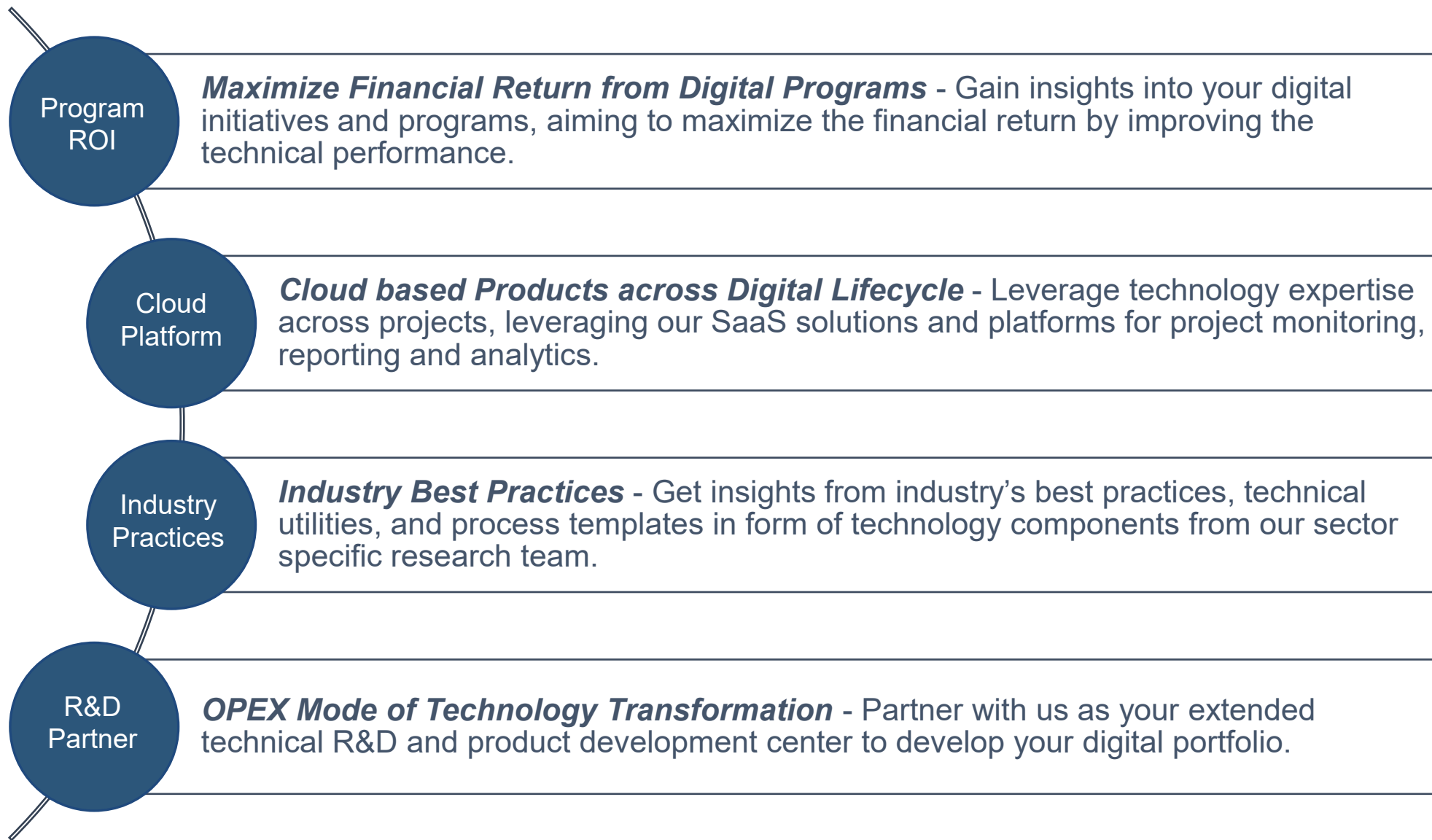
Solutions Design

- 90 days of rapid development on MLOps Platform (Azure/GCP/AWS)
- Platform scale approach with open API design

Risk Management

- OPEX model of technology transformation
- Partnered with leading technology cloud vendors

PARTNERSHIP BENEFITS



Nigeria : Block C, 2, Ann Mbachu Street, Whiteoak,
Ologolo Road, Lekki, Lekki-Epe Expressway, Lagos

Canada : 430 Ginger Downs, Mississauga
ON L5A 3A7

India : 4-7290, Sailashree Vihar, Bhubaneswar,
Odisha

THANK YOU



sales@geohelda.com



[Geohelda](#)

